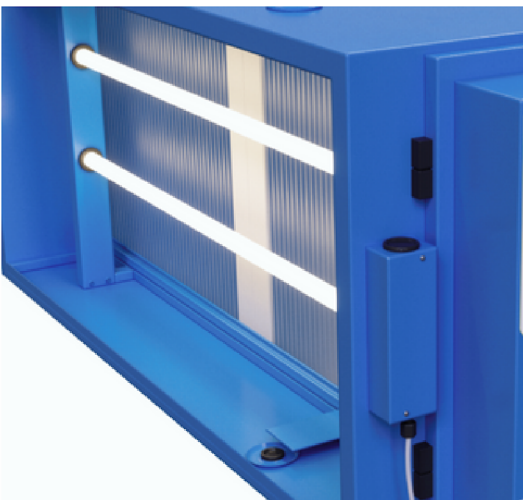


ESP - UV - CARBON KITCHEN EXHAUST FILTRATION SYSTEM



Combination of **ESP / UV and activated carbon filtration** to remove smoke, grease and odour from the kitchen exhaust system.

3 STAGE FILTRATION PROCESS



Integration of ESP - UV to remove smoke, grease and odours



Final phases of the filtering process the activated carbon filtration v bank to absorb any residual ozone and odours in the kitchen exhaust system.

MODULAR DESIGNED



Electrostatic air cleaner with uv ozone and activated carbon v bank filtration units can be stacked on top of each other for increased airflow (L/s) requirement.

ESP - UV & CARBON QUICK DATA

SINGLE PASS PASS 95% EFFICIENCY CONFIGURATION

| Models | Airflows | Dimensions | Carbon / UV Available | Pressure drop | Efficiency |
|---------------------|----------|--|-----------------------|---------------|------------|
| RY2500B - UV - ACF | 700 L/S | L : 694 mm W : 1420 mm H : 540 mm | YES | 160 Pa | 95% |
| RY5000B - UV - ACF | 1400 L/S | L : 1243 mm W : 1420 mm H : 540 mm | YES | 160 Pa | 95% |
| RY7500B - UV - ACF | 2100 L/S | L : 1790 mm W : 1420 mm H : 540 mm | YES | 160 Pa | 95% |
| RY10000B - UV - ACF | 2800 L/S | L : 2338 mm W : 1420 mm H : 540 mm | YES | 160 Pa | 95% |

DOUBLE PASS PASS 99.9 % EFFICIENCY CONFIGURATION

| Models | Airflows | Dimensions | Carbon / UV Available | Pressure drop | Efficiency |
|--------------------------|----------|---------------------------------------|-----------------------|---------------|------------|
| RY2500B - DP - UV - ACF | 700 L/S | L: 694 mm W: 2040 mm H: 540 mm | YES | 220 Pa | 99.9 % |
| RY5000B - DP - UV - ACF | 1400 L/S | L: 1243 mm W: 2040 mm H: 540 mm | YES | 220 Pa | 99.9 % |
| RY7500B - DP - UV - ACF | 2100 L/S | L: 1790 mm W: 2040 mm H: 540 mm | YES | 220 Pa | 99.9 % |
| RY10000B - DP - UV - ACF | 2800 L/S | L: 2338 mm W: 2040 mm H: 540 mm | YES | 220 Pa | 99.9 % |

Note: Triple pass electrostatic air cleaner with uv ozone and activated carbon v bank filtration available

Certified & Tested To



T: (02) 9721 0020

E: info@aosaus.com.au

W: www.aosaus.com.au

