



Maintenance procedures of the Mist Tec

o Turn off power which the blank switch (ON / OFF) which is located on top of the Grundfos water pump.



o Open the access door It may be located on the side or top of the unit and once removed with screwdriver or cordless drill access will be available.



o Safety remove the UL approved stainless steel baffle filter inside the Mist Tec unit



o Once filter is removed wash down inside unit with maintenance hose spray hose and also clean inside the unit.



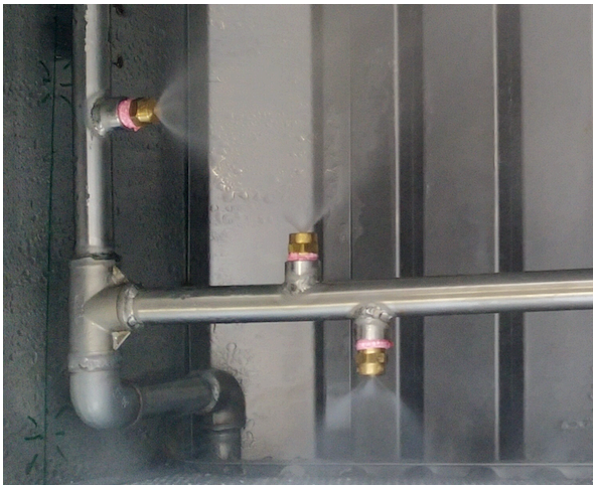
o Wash down and clean any large grease debris inside the unit and scrap any large debris and give the stainless filters a clean to remove any grease and oil via spray hose



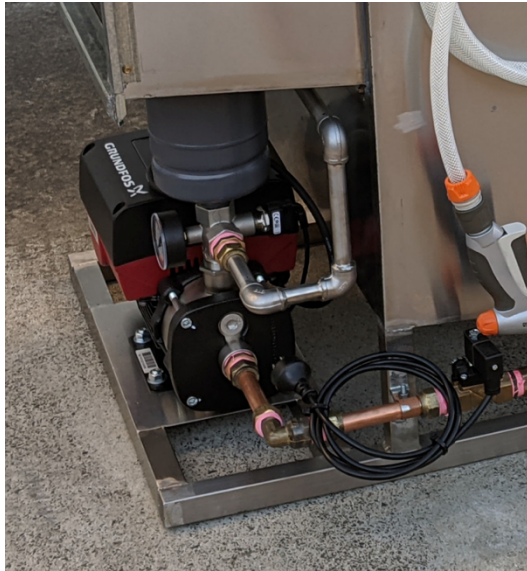
o Put back stainless-steel filter correctly back into its original position.



o Wipe and clean spray nozzles with warm water if spray nozzles are blocked
use a sewing pin to unblock.



o Turn on water pump to check any blockages and make sure they are working correctly for operation mode.



o If the Mist Tec unit is working correctly put all access panels back into position and screw back correctly.



o Make sure Mist Tec is in operation mode (Press power button ON).

